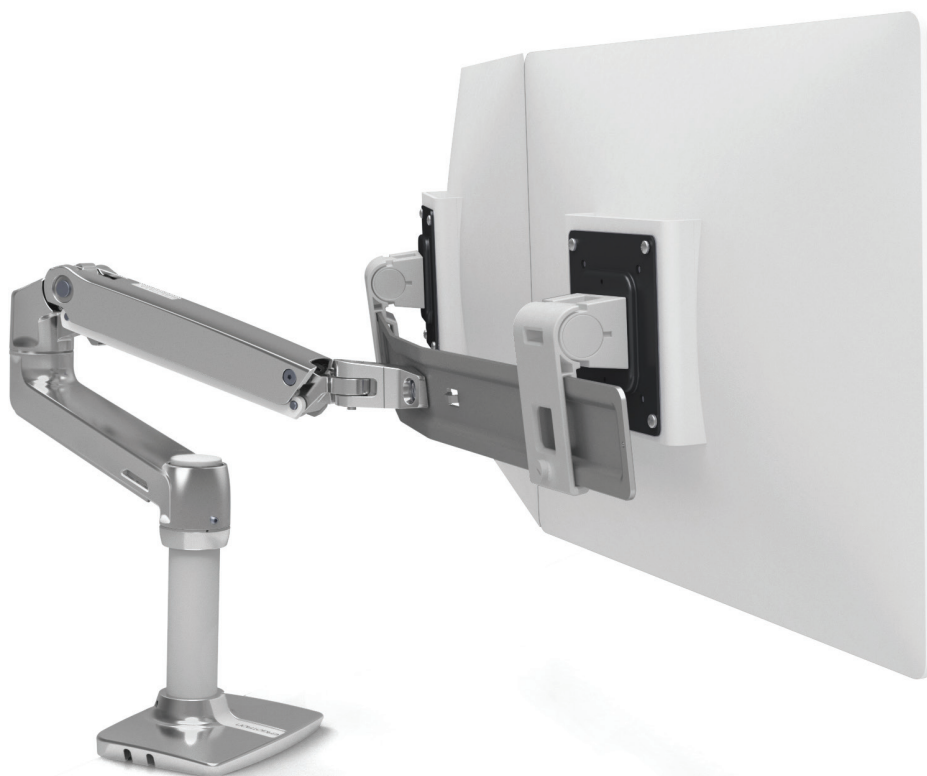


ergotron[®]

moving you forward

LX台式双配置直立臂

- Easily move two monitors simultaneously to the best ergonomic position
- Allows you to work comfortably and helps reduce eye, back and neck strain
- Frees up your desktop to increase valuable workspace
- Offers an easy to use experience — simple installation to effortless operation
- Provides easy display adjustment with patented Constant Force™ technology
- Passes Ergotron's 10,000-cycle motion test ensuring years of trouble-free height adjustment
- 10-year warranty
- Multiple desk attachment options are available included with LX arms and as accessory kits



COMPACT DUAL MONITOR ARM INCREASES YOUR WORKSPACE WITH FLEXIBLE, EASY-TO-USE ADJUSTMENT

Create a fully adjustable side-by-side monitor set-up that lifts both LCD screens simultaneously with the LX Desk Dual Direct Arm. The monitor arm makes it easier to see your screens while letting you make the most of valuable workspace.

Repositioning your LCDs is easy. With a simple touch, you can move the screens up, down, forward or back. Customize your view further with individual up and down tilt for each monitor. The low-profile monitor cross-bar provides a compact range of motion that is suitable for most desks.



LX台式双配置直立臂



EACH MONITOR HAS INDIVIDUAL UP/DOWN TILT

THE LOW-PROFILE MONITOR CROSS-BAR PROVIDES A COMPACT RANGE OF MOTION

SHOWN WITH WORKFIT-TL SIT-STAND WORKSTATION



INCLUDED:
STANDARD 2-PIECE DESK CLAMP
ATTACHES TO SURFACE EDGE



GROMMET MOUNT KIT
ACCESSORY 98-034:
ATTACHES THROUGH
SURFACE HOLE



RECOMMENDED ACCESSORY:
LX DUAL DIRECT HANDLE KIT
98-037-062 WHITE
98-037-224 MATTE BLACK

LX台式双配置直立臂

LX双配置直立手柄套件

| | | |
|---|---|--|
| 型号 (颜色) | 45-489-026 (抛光铝) 45-489-216 (白色) 45-489-224 (哑光黑) | 98-037-062 |
| 包括 | LX Arm, extension, standard 2-piece desk clamp, dual bow, (2) monitor pivots, 17.78 cm pole and monitor mounting hardware | Handle and handle mounting hardware |
| 典型的液晶显示器尺寸 | ≤ 25" | — |
| LCD 尺寸为近似值，其大小是指屏幕对角线的测量值。只要LCD净重没有超过支架的最大承重，LCD尺寸再大一点也许也不影响使用。 | | |
| 承重范围 | Maximum individual LCD weight 1–5 kg per monitor. Total weight capacity 1.8–9.9 kg | — |
| 升降 | 33 cm | 14.5–25.4 cm Adjustable vertical height from center of monitor pivot to top of handle |
| 倾斜 | ↑ 13° / ↓ 17° | — |
| 平移角度 | 360° | — |
| 旋转 | 360° | — |
| VESA | VESA FDMI MIS-D, 100/75, C (100 x 100 mm & 75 x 75 mm hole pattern) | — |
| 延伸 | ≤ 61.7 cm | — |
| 装运重量 | 6.6 kg | 1.5 kg |
| 装运尺寸 | 83 x 33 x 18 cm | 37 x 33 x 21 cm |
| 保修 | 10 年 | |

下载更多资料，请访问www.ergotron.com
更多信息，请咨询：
北美800.888.8458 / +1.651.681.7600 / insidesales@ergotron.com
欧洲与中东 +31.33.45.600 / info.eu@ergotron.com
亚洲环太平洋地区 apaccustomerservice@ergotron.com
中国客服专线：400-120-3051 apaccustomerservice@ergotron.com
客制：custom@ergotron.com

© Ergotron Inc. 2021/ 03/ 27
内容可能变更
Ergotron设备并非旨在治愈、治疗、减轻或预防任何疾病
WorkFit, Neo-Flex和PowerShuttle 此三个商标已在北美和中国注册。
WorkFit, StyleView, LearnFit, Neo-Flex, PowerShuttle, LiFeKinnex, CareFit 和 eKinnex 都是Ergotron已注册商标。

